

2025 Edition



*Experiencing
Príncipe
Real
with memmo.*

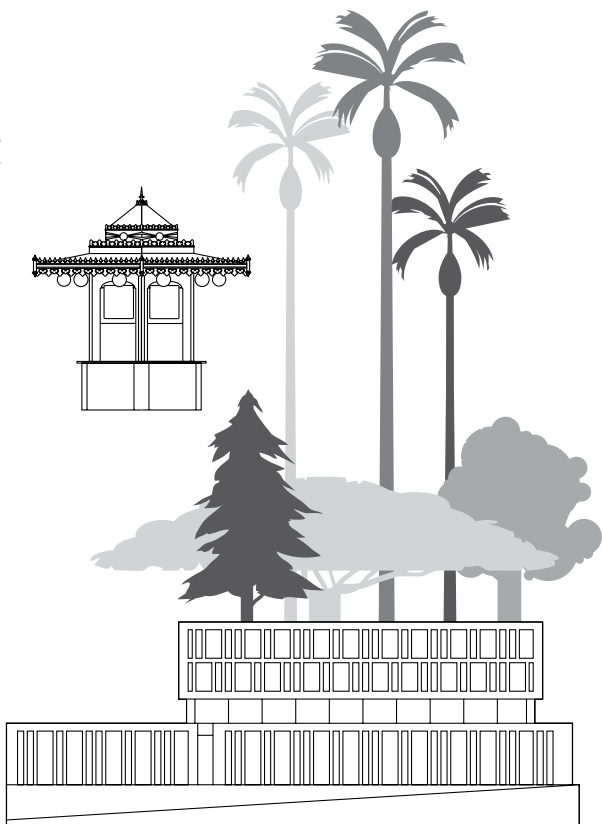


memmohotels.com

**OUR GUIDE TO EXPLORING
THE NEIGHBOURHOOD**

memmo
PRÍNCIPE REAL

LISBOA • PORTUGAL



Text: Mariana Correia de Barros • Illustrations: João Maio Pinto • Design: José Mendes

Príncipe Real, whose name pays homage to 'Royal Prince' Dom Pedro V (1837-1861), eldest son of Queen Dona Maria II (1819-1853), is one of Lisbon's most vibrant neighbourhoods. In recent years its smart residential buildings, colourful palaces and gardens and viewpoints have been joined by restaurants run by Portuguese chefs, stores selling design items and other creative brands that have contributed to making it a place to visit and linger for any visitor to the city.

The blood now pulsing through this trendy, laid-back and charming district comes from both the new businesses opened by talented people and the youngsters who have been choosing it as a place to live. The result is a neighbourhood that is ideal to visit at any time of day, whether for morning shopping, a peaceful lunch, a late-afternoon drink or a dinner of fine Portuguese food.

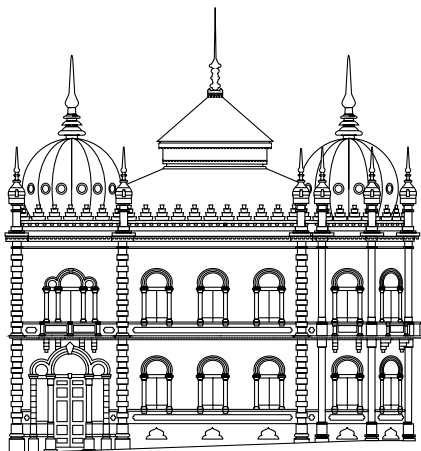
Leaving memmo Príncipe Real, you enter Rua Dom Pedro V, where every other door

opens onto a cool shop or restaurant. Turn left and you will find the Miradouro de São Pedro de Alcântara, a wide terrace with one of the best views of the city. Turn right and before long you reach Jardim do Príncipe Real, a garden that is ideal for a break before you continue along Rua da Escola Politécnica, another must when getting to know the neighbourhood.

Among all the shops, museums, gardens and restaurants in the area, here are our suggestions as you explore buzzing Príncipe Real.



To buy



We start with a warning: it's easy to lose your head in the stores of Príncipe Real. For many years, it has been the place where local fashion designers chose to set up ateliers open to the public. Today it combines that high-fashion side with other brands – Portuguese and foreign – that suit

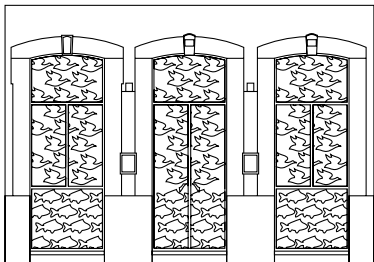
every taste. You could start your tour with **New Black Urban Concept Store**, with women's clothing and accessories from leading brands such as Maison Margiela and Karl Lagerfeld. **Shon Mott**, from Spain, is a novelty in Portugal, with the concept of slow fashion, based on timeless pieces for men and women. Ever since she opened the store in Príncipe Real, has wanted to create a universe apart. And she did it. More counter, less counter, **Amélie au Théâtre** remains faithful to the imagination of the luxurious boudoir, decorated with chandeliers and flowers. Created in one of the most feminine environments in Lisbon, Amélia selects the fashion that best fits the space, mixing it with her accessories and unique design pieces. All this with the right touch of extravagance. Also on Rua Dom Pedro V you can find the work of Bosnian-born stylist **Lidija Kolovrat**, who was one of the first designers to set up shop in the neighbourhood.

Benâmor was founded in 1925 in Lisbon by a pharmacist who created miraculous ointments at Campo Grande nº189. His hand-made skin recipes were based on natural ingredients and packaged in adorable art deco tubes. It was an instant hit! Adopted by all Lisbon Belles throughout the 20th century, including Queen Amélia, Benâmor remains today one of Portugal's most beloved beauty brands. For a different shopping experience, in a neo-Moorish palace, step inside **Embaixada**. Here various stores display clothing, accessories and even home décor over two floors. At **Papua Market** shop you will find a great variety of clothing, swimwear and accessories always with a focus on sustainability and recycling. Committed, for the last eleven years, to discovering new brands and innovative products that offer a fresh and unique combination that can't be found anywhere else, Real Slow Concept Store has moved to a new space and

adopted a new name: **Loja Real Pink Palace Pop-Up**. With its origins in Brazil, **Livraria da Travessa** arrived in Lisbon in 2019, adopting the Brazilian concept stores: a neighbourhood bookstore, where you go to stay, dedicated to the arts, photography, architecture, humanities and much more, with unique architectural designs. During your tour you will also find **Stró**, a Portuguese brand of sustainable textile design and production that values the creation of simple, organic, and timeless clothing and household pieces, designed using only certified natural materials.



To taste



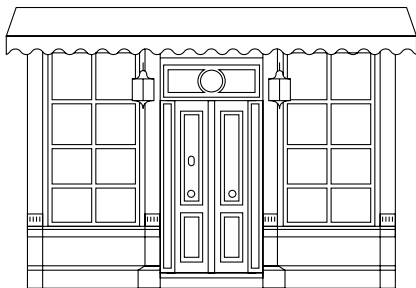
Little by little, Príncipe Real has been invaded by restaurants run by Portuguese chefs. Overseen by Jorge Fernandes, **Café Príncipe Real** is a veritable celebration of the Portuguese-speaking world, inspired by Portuguese historical voyages to South America, Africa and Asia. Nearby, one of the area's most popular restaurants – and one of the most difficult places to secure a table – is **A Cevicheria**, offering Peruvian cuisine made from Portuguese ingredients, overseen by chef Kiko Martins. Another place where

you can't book ahead is **Tapisco**, a place that offers a mixture of Portuguese petiscos (snacks) and Spanish-style tapas, all dreamed up by chef Henrique Sá Pessoa. **Faz Frio** restaurant has been around for about a century! Council records would indicate that the restaurant dates back to before 1863. Today, you will find a fresh atmosphere along with standard traditional Portuguese dishes. Of particular interest are the drawings that adorn the wood partitions, which stand out in the interior decoration and close off the private cubicles from the inside and outside. On hot days refresh yourself at **UAO by Mú** an artisan ice cream parlour featuring flavours with fresh and dried fruit. At the **Las dos Manos** restaurant, located across the street from the Miradouro de São Pedro de Alcântara, you can embark on a journey of Mexican and Japanese flavours with the signature of chef Kiko Martins. If you are looking for a Portuguese-style snack in

the middle of the day, the **Doce Real** is the right place for that: it offers pies, croissants, and ham and cheese toasted sandwiches. Cold days (or any other day, if the truth be told) are a good time to sample the hot chocolate at **Bettina & Niccolò Corallo**, one of the city's best chocolatiers. Before you leave Lisbon, stop at **Moy - Merceria Fina** to fill a basket with gourmet goods such as biscuits, teas, cheeses, and meats of the highest quality, or **Queijaria**, a shop that stocks some of the country's - and Europe's - best cheeses. For one of the city's top outdoor dining experiences, reserve a table outside at **Zero Zero**, whose very special pizzas are made in a wood-burning oven.



To drink

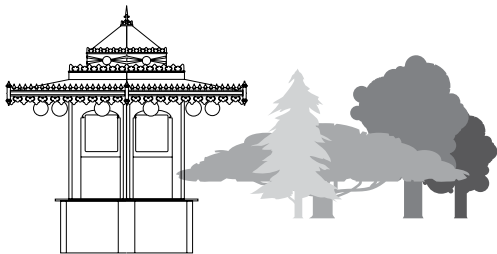


The last few years have been good to this neighbourhood where bars are concerned: there are ever more, all of them top-notch. The **Pub Lisboaeta**, near our hotel, is a good example of a friendly bar with a range of cocktails and some premium Tequilas. Located on the top floor of an old building that also houses a modern hostel with suites, **The Insólito** is a good place to stop for a cocktail (try the Bloody Mary!) while enjoying a view over Lisbon. Located at the atrium

of the “**EmbaiXada**” building, **Gin Lovers** bar offers you a variety of more than 50 types of Gins and a list of signature cocktails. Lastly, make sure to look into the **Pavilhão Chinês**, an old-style bar famed both for its drinks and for the vast collection of lead soldiers, soldiers’ helmets, model planes and other trinkets displayed on its shelves.

To visit

Jardim do Príncipe Real



In the Jardim do Príncipe Real, the neighbourhood’s nerve centre, here are two

kiosks where locals like to linger, a children's playground much used by local families, and a cypress tree that is getting on for 150 years old, whose sprawling branches provide shade for various wooden benches.

Every Saturday morning the garden hosts a bustling market for organic products brought in by local producers, and on the last Saturday and Monday of the month there is a crafts and antique market.

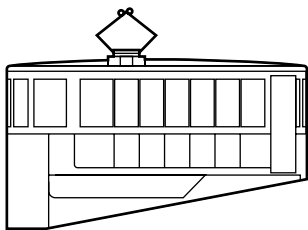
Miradouro de São Pedro de Alcântara (View point)



If you want to enjoy one of the best views in town, head for the Miradouro de São

Pedro de Alcântara, where the panorama takes in the Castelo de São Jorge (St George's Castle), Sé de Lisboa (Lisbon Cathedral), Baixa (downtown) and Tagus River. On the upper terrace there is a map in azulejos (ceramic tiles) that identifies the city's main buildings; down the steps is a garden with several benches where you can relax before continuing your exploration of the city. There are also two kiosk cafés with outdoor seating here.

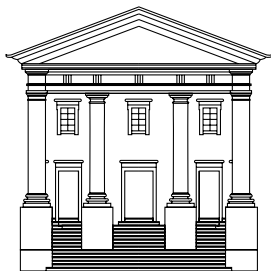
Elevador da Glória



Next door is the **Elevador da Glória**, one of Lisbon's famous yellow funiculars, photo-

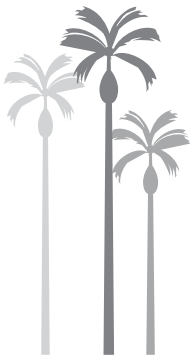
graphed countless times, which has clanked up and down the hill here since the end of the 19th century. It links Bairro Alto, the neighbourhood next to Príncipe Real, with Praça dos Restauradores, downtown.

Museu Nacional de História Natural e da Ciência



Meanwhile, the **Museu Nacional de História Natural e da Ciência** takes visitors on a voyage around science and natural history in Portugal, with displays that range from antique scientific equipment to collections of spiders and herbariums.

Jardim Botânico de Lisboa



Makesure not to miss the amazing chemistry lab and the Jardim Botânico de Lisboa, a botanical garden laid out in the 19th century as a teaching aid, with species from all around the world.

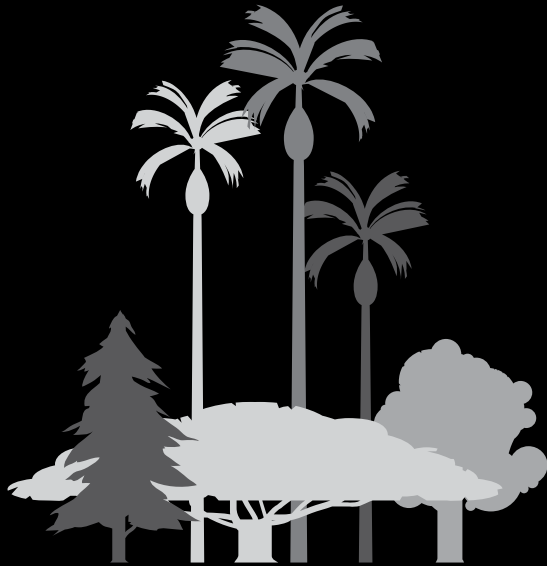
Museu de São Roque

On the edge of the Bairro Alto you find the **Museu de São Roque**, a museum abutting the former Jesuit church of the same name. Opened in the early 20th century, it harbours

collections telling the story of the shrine that once stood on the spot and of the Society of Jesus in Portugal, as well as art from Asia and many other paintings, sculptures and goldwork.







General Information:

TO BUY IN OUR NEIGHBOURHOOD

1. New Black Urban Concept Store

Rua Dom Pedro V, 120.

21 342 0912

Monday to Sunday 10am-8pm

2. Shon Mott

Rua Dom Pedro V, 43

21 404 2620

Monday to Saturday 10.30am-8pm

3. Amélie au Théâtre

Rua da Escola Politécnica 69-71

21 598 2900

Monday to Monday 10.30am-7pm

Sunday 10.30am-7pm

4. Lidija Kolovrat

Rua Dom Pedro V, 79

21 387 4536

Monday to Saturday 10.30am-8pm

5. Benamôr 1925

R. da Escola Politécnica 8

21 151 6164

Thursday to Saturday 12am-7pm

6. Embaixada

Praça do Príncipe Real, 26

96 530 9154

Monday to Saturday 12am-8pm

Sunday 11am-7pm

7. Papua

R. da Escola Politécnica 45 and 47

21 342 0923

Monday to Saturday 10am-8pm

Sunday 10am-7pm

8. Loja Real

Praça do Príncipe Real 19

21 822 3756

Monday to Sunday 10.30am-8pm

9. Livraria da Travessa

Rua da Escola Politécnica 46

21 346 0553

Monday to Saturday 10am-10pm

Sunday 11am-8pm

10. Stró

Rua da Escola Politécnica 80A and 80B

21 249 7130

Monday to Saturday 10.30am-1.30pm,

2.30pm-7.30pm

TO TASTE OUR FLAVOURS

11. Café Príncipe Real

Rua Dom Pedro V, 56J.

96 184 4248

Monday to Sunday 12.30am-3pm,

7.30-10pm (Thursday & Friday to 11pm)

12. A Cevicheria

Rua Dom Pedro V, 129

21 803 8815

Monday to Sunday noon-midnight

13. Tapisco

Rua Dom Pedro V, 81

21 342 0681

Monday to Friday 12pm-4pm, 6pm-12am

Saturday & Sunday noon-midnight

14. Faz Frio

R. Dom Pedro V 96

21 581 4296

Monday to Wednesday 12.00pm-1am

Thursday to Saturday 12pm-2am

Sunday noon-midnight

15. UAO by Mú

R. Dom Pedro V 145

21 138 3477

Monday to Sunday 12am-3pm; 4pm-10pm

16. Las dos Manos

Rua São Pedro de Alcântara, 59

21 589 7269

Monday to Sunday 12pm-11pm

17. Doce Real

Rua Dom Pedro V, 119

21 346 5423

Monday to Friday 7am-7pm,

Saturday & Sunday 8am-7pm

18. Bettina & Niccolò Corallo

Rua da Escola Politécnica, 4

21 386 2158

Monday to Saturday 10am-7pm

19. Moy - Mercearia Fina

Rua Dom Pedro V, 111

21 346 7011

Monday to Saturday 10am-7pm

20. Queijaria

Rua Monte Olivete, 40.

21 346 0474

Tuesday to Friday 12pm-8pm;

Saturday 10am-8pm

21. Zero Zero

Rua da Escola Politécnica, 32.

21 342 0091

Monday to Sunday noon-midnight

FOR A DRINK

22. Pub Lisboeta

Rua Dom Pedro V, 63

91 742 7013

Tuesday to Sunday 5pm-2am

23. The Insólito

Rua de São Pedro de Alcântara, 83

91 118 3459

Tuesday & Thursday 6pm-12am;

Friday to Saturday 6pm-1am

24. Gin Lovers

Praça do Príncipe Real 26

21 347 1341

Sunday - Thursday noon-midnight

Friday - Saturday 12pm-2am

25. Pavilhão Chinês

Rua Dom Pedro V, 89

21 342 4729

Monday to Saturday 9pm-2am

PLACES TO VISIT

Museu Nacional de História Natural e da Ciência

Rua da Escola Politécnica, 56

21 392 1808

Tuesday to Sunday 10am-5pm

Jardim Botânico de Lisboa

Rua da Escola Politécnica, 58

21 392 1800

Monday to Sunday 9am-5pm

Museu de São Roque

Largo Trindade Coelho

21 323 5444

April to September: Tuesday to Sunday 10am-
7pm

October to January: Tuesday to Sunday
10am-6pm

Quiosque de Lisboa

Praça do Príncipe Real, 19

21 805 5266

Monday to Sunday 8.30am-2am

memmo *Unforgettable Hotels*

