

Travel Top 50 2017/18

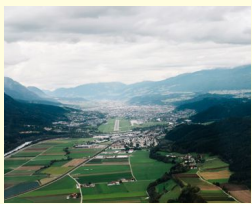
A guide to aviation's high-fliers, rail carriages with class, masterful hoteliers and service stars the world over

50

- An untouched modernist hotel • The tastiest spot to breakfast with the papers • A first-rate long-haul refresh
- The host with the most in Munich • An Antipodean airline lounge par excellence • The freshest on-board bed-linen • Cathay's hotly awaited new lounge • Why Italian trains mean business • Hong Kong's smartest new hotel opening • The industry veteran opening up Laos • The sharpest new on-board cutlery • The mavens rethinking the motel • Paddington's proudest new stop-over
- The must-try brekkie reset in Bangkok • A cosy Catskills lodge • London's top late-night bolthole • Two US airports primed for take-off • The architects we'd hire for a hospitality fix-up • Plus many more to sample

An annual MONOCLE supplement

18



Best approach
• Innsbruck Airport
• Austria

Fifteen minutes before touching down at Innsbruck is the time you realise you're about to experience something spectacular, as the snow-tipped Alps jut out around and beneath you. At five minutes from touchdown the plane dips closer to land and passengers might be forgiven for worrying where exactly they will touch down.

At last a break in the landscape appears: the Inn River and a small city hover into view. In the final seconds of the descent it seems as if the plane's wings might scrape the nearby slopes. On the ground, after all that breath-holding, the first gulp of pure Tyrolean mountain air is tonic on the tarmac. — KB
innsbruck-airport.com



19
Smartest new urban hotel
• Memmo Principe Real
• Lisbon

Hotels can be escapes but those in the middle of town must chime with their neighbourhoods in this respect the Memmo Principe Real is spott. The 41-room stopover (formerly an inauspicious garage) achieves this in part due to its high vantage: perched atop one of the seven hills of Lisbon. It's also thanks to a policy of welcoming locals into its restaurant and smart terrace bar. "We are aiming for a vibe where locals, international visitors and guests mingle," says affable managing director Rodrigo Machado. Rooms feature smart Bang & Olufsen TVs, Hermès amenities and, in some cases, balconies with outdoor fireplaces for enjoying late-night views across the city. — TL
memmohotels.com

20
Most eagerly awaited renovation
• TWA Flight Center
• New York

Eero Saarinen's cast-concrete TWA Flight Centre at New York's JFK Airport is one of the most iconic remnants from the golden age of jetsetting. It has been lying ignominiously abandoned since 2001 but MCR Development is breathing new life into one of the US's best modernist buildings, this time as a hotel.

The €220m restoration of the terminal – along with additional construction that's intended to stay architecturally vanilla so as not to impact on the original structure's beauty – is slated to open in 2019. When finished the hotel will feature 505 guestrooms, with the main terminal becoming one of the largest hotel lobbies in the world. — CMF
tawahotel.com



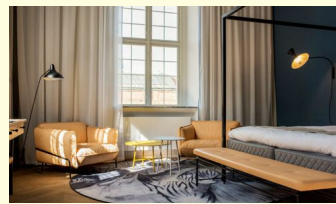
PHOTOGRAPHS: DAMEL CALDER & FOLDSIDE; BISHOP CORRIE; JAMES BUCHANAN; RIVER REPORTS/ALAMY; GRIFFIN

21
Best brand addition
• Nobis, Copenhagen
• Copenhagen

Stockholm's Nobis settled on the former Royal Danish Academy of Music for its fifth hotel and first (long-awaited) foray outside Sweden; it has 77 rooms and is but a few pedal pushes from Tivoli Gardens. The interiors are by Swedish firm Wingårds, with lighting by Wästberg and carpets by Kasthall; the staircase is also an elevating feat of refurbishment. Having begun in restaurants, Nobis takes food seriously; Danish chef Jeppe Foldager helped build the kitchen and its team from scratch. — TR
nobishotel.dk



Nordic outreach
Nobis's expansion will continue with two new Spanish properties

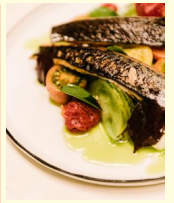


22
Most eagerly awaited jet
• Pilatus PC-24
• Switzerland

There are, Pilatus claims, 21,000 landing strips from and on which the PC-24 can take off and land. It has interiors by BMW Designworks, a cargo door that beats any of the jets in its class and is due for delivery to its first operator by the end of 2017. Give all this, it seems an ideal way to get about, no matter how remote. — TMA
pilatus-aircraft.com

23
Timeliest route addition
• JAL's overnight London service
• Tokyo

Japan Airlines' new flight on the busy Haneda-to-Heathrow route departs at 02.45, leaving time to polish off supper and drain a drink. It's perfect for the Tokyo-to-London traveller: you'll arrive into Heathrow at 06.25 – then it's 15 minutes by train to the city. The reverse route departs at 09.30 and arrives at 06.25 the next day. — JT
jal.com



24
Best dining partner
• Thomas Lyons
• Berlin

Business travel can mean dinner alone sometimes but you're guaranteed to find good company – solicitous but never intrusive – with Thomas Lyons of Berlin's Michelberger restaurant. The keys to success in the service industry? "Optimism and patience; hospitality can be a demanding, stressful environment," says the Brisbane-born restaurant manager, who's been here since 2016. "Guests will always reflect and amplify the energy you direct to them. So if you enjoy your work and protect that positivity you will naturally entertain people." The food completes the experience: try the pork neck and salted plum borscht with a chilled glass of something from the Moselle Valley. — JAF
michelbergerhotel.com